

Trench Drain Pan

Specifications

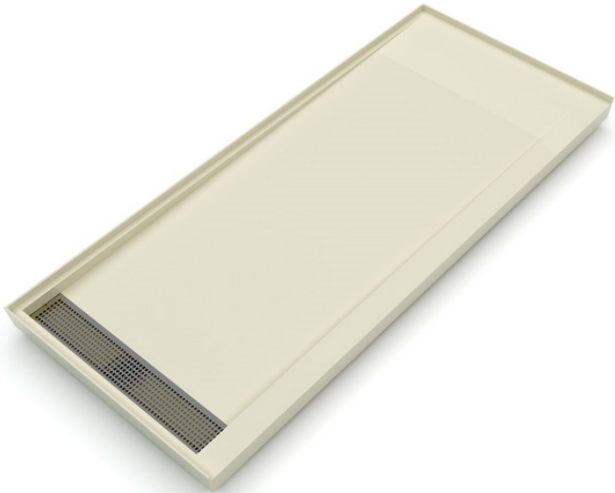
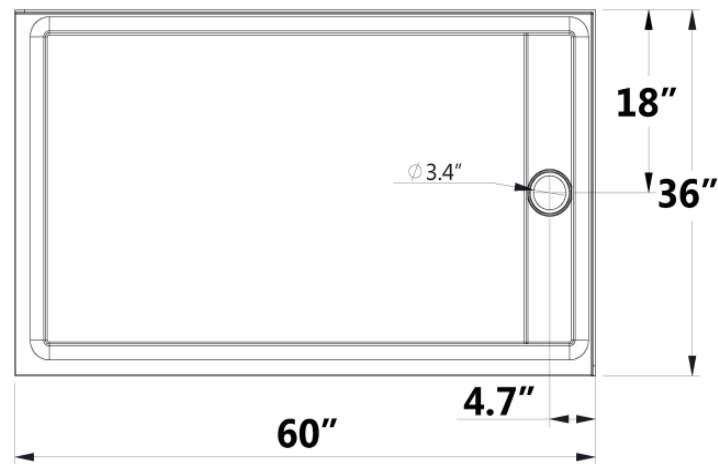
- **Size overall:** 60" x 36"
- **Finish:** Textured, non-slip
- **Drain Information:** Trench Drain
- **Front Curb:** Integral 4-1/4" high
- **Weight:** 111 lbs
- Integral Flange on sides and back
- Product complies with one or more of the following: IAPMO, ANZI, CSA, & ASTM F462-79



Model	Material	Color
Trench Drain Pan	Cultured Marble	White

Standard Features

- Solid one piece construction
- Abrasion resistant gel coat
- Water-proof and leak-proof
- Bacteria resistant
- Maintenance free



JOROTM